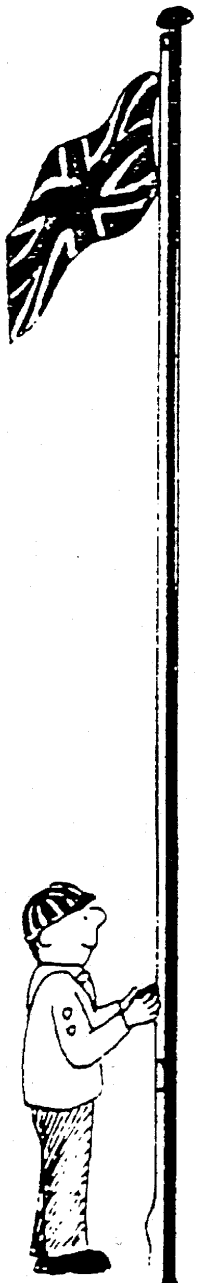


SKETCHING GRAPHS FROM WORDS

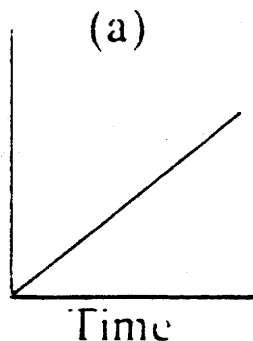
Hoisting the flag

Every morning, on the summer camp, the youngest boy scout has to hoist a flag to the top of the flagpole.

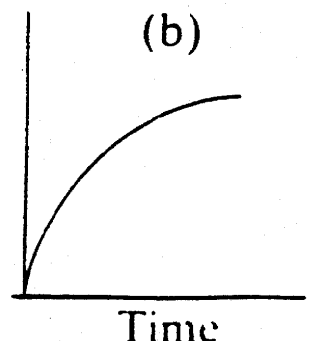
- Explain in words what each of the graphs below would mean.
- Which graph shows this situation most realistically? Explain.
- Which graph is the least realistic? Explain.



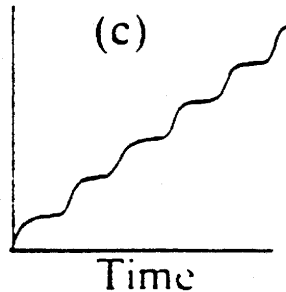
Height of flag



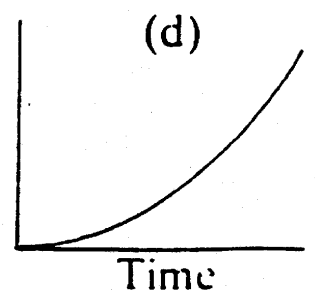
Height of flag



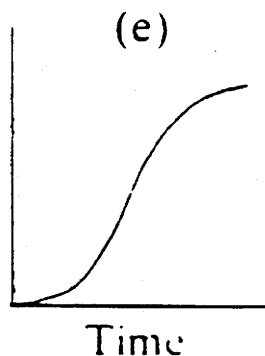
Height of flag



Height of flag



Height of flag



Height of flag

