

Chapter 3 Test  
MATH 60 Fall 2007

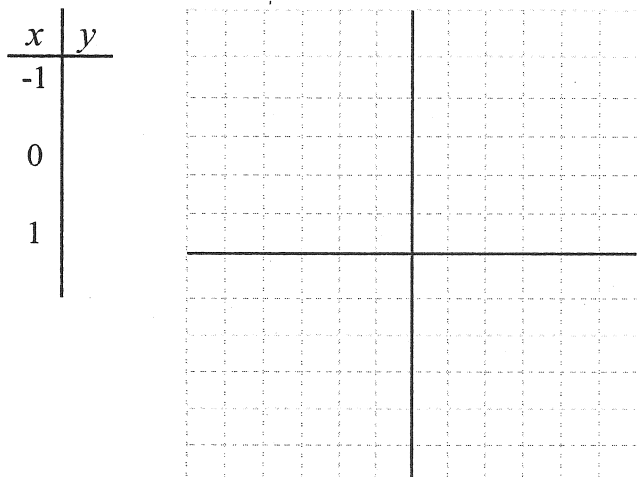
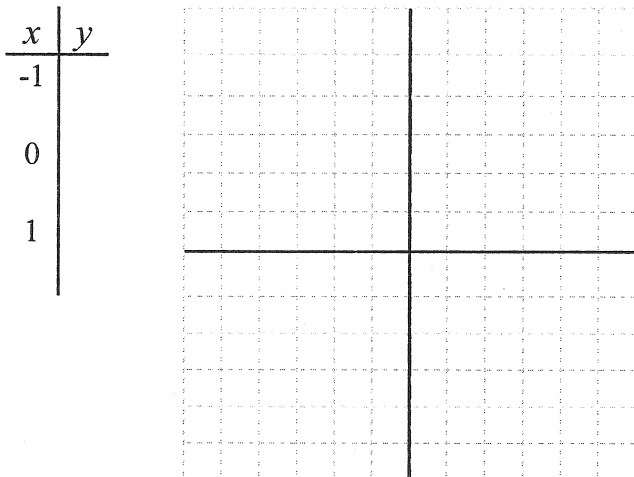
Read each question carefully, show your work in the space provided, and box your answers. No calculators are allowed. Anyone *suspected* of cheating will get a zero on the exam.

1. The percentage of the U.S. population that resides in the country has decreased from 22% in 1980 to about 20% in 1996. (10 points)
  - a) Estimate the percentage of the U.S. population residing in the country in 1988
  - b) Predict the percentage of the U.S. population residing in the country in 2000

Fill in the t-chart and graph for each equation. (10 points each)

2.  $y = \frac{1}{2}x + 1$

3.  $8y + 2x = -4$



Write a point-slope equation for the line with the following two points (5 points each)

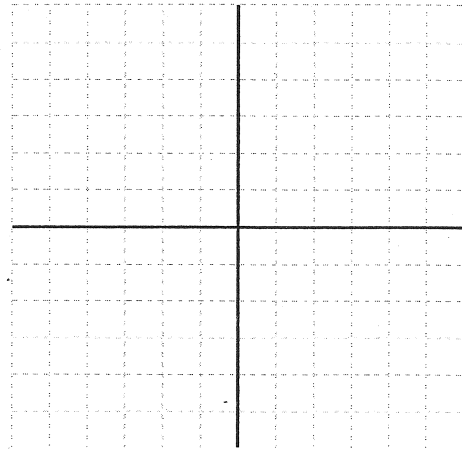
4.  $(1, 2), (3, -4)$

5.  $(-5, -1), (2, 3)$

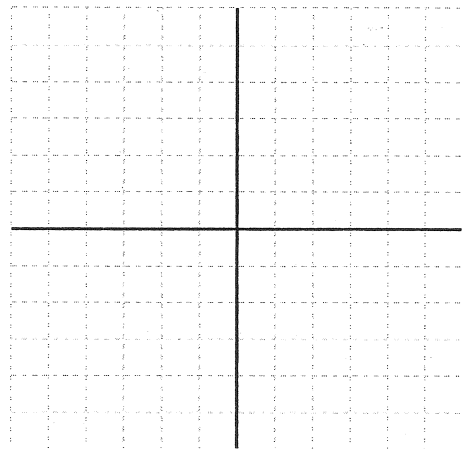
Name: \_\_\_\_\_

Find the intercepts for each equation then graph (10 points each)

6.  $6x + 9y = 18$



7.  $-3x = 6y - 2$



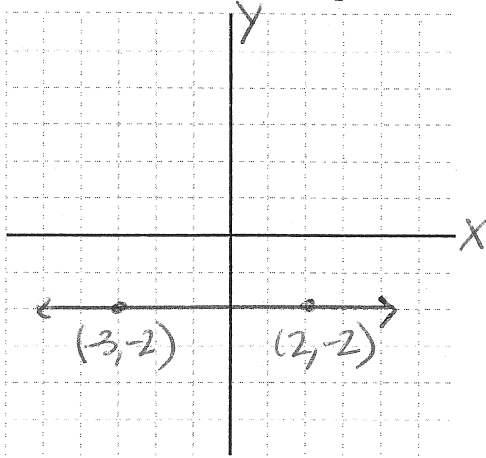
Write a slope-intercept equation for the line with the following two points (10 points each)

8.  $(6, -4), (0, 2)$

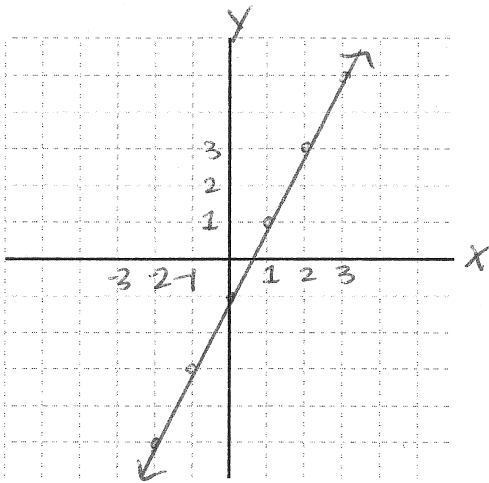
9.  $(-1, 2), (8, -2)$

Find the equation which corresponds to the graphed line. (5 points each)

10.



11.



Extra Credit: (5 points)

How do office hours work and where are they held for this class?