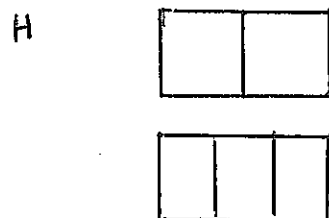
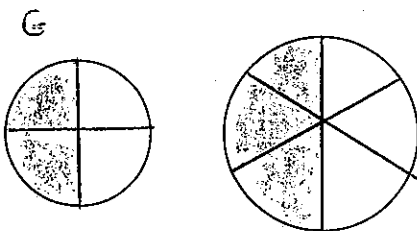
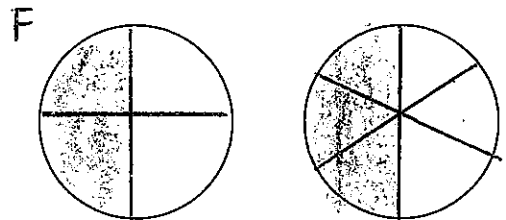
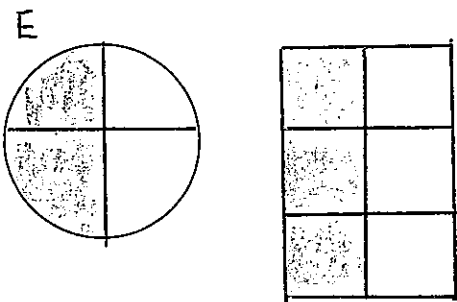
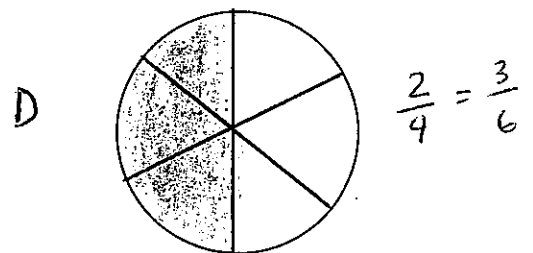
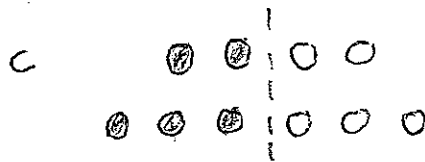
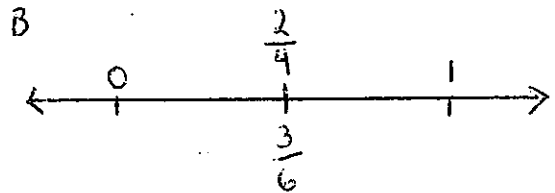
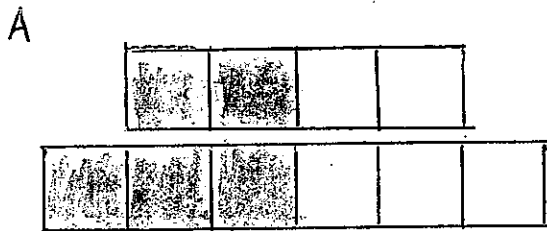


The following are all representations to show that  $\frac{2}{4}$  and  $\frac{3}{6}$  are equivalent. Discuss the strengths or weaknesses of these different models.



I. I ate  $\frac{2}{4}$  of a pizza from Round Table. My friend ate  $\frac{3}{6}$  of a pizza from Papa Johns. We ate the same amount of pizza.